



**NOFER**  
BIM Plugin for Autodesk Revit



Ver 2.0\_feb'19

## 1. Description

Plugin NOFER for Revit contains all products of the manufacturer. The catalogue is downloadable as installer for Windows.

Plugin is designed with graphic interface which allows to select and specify sanitary products in projects. All these objects contain real technical information for products to ease the work of architects and civil engineers during the work on a project.

Plugin is free for users to install and use and its compatible with Revit versions 2016, 2017, 2018 and 2019.

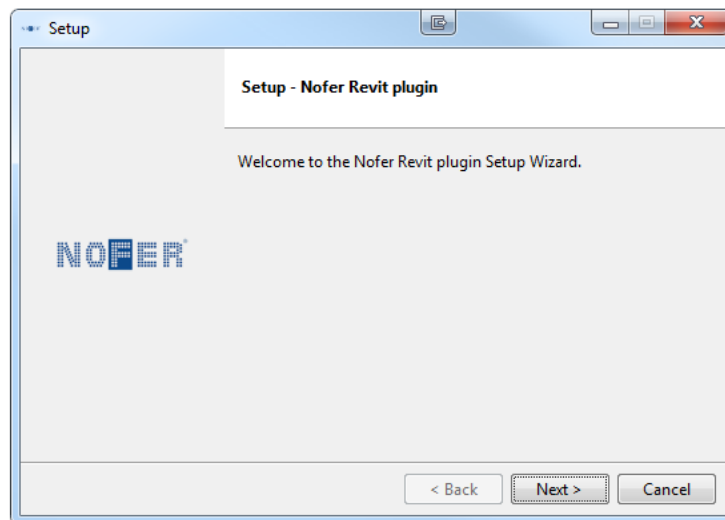
## 2. Plugin installation for Windows users

Using the link on the Nofer Website:

[http://www.nofer.com/files/descargas/files/Nofer\\_BIM.zip](http://www.nofer.com/files/descargas/files/Nofer_BIM.zip) download the .exe file of the plugin in .zip compressed format. Then, unzip it and execute it by double clicking on it.

Double clicking on Nofer.RA.EN.5.0.1.20190130.exe and running starts the installation. Select installation language. Before starting, you have to close all files that are open in Revit.

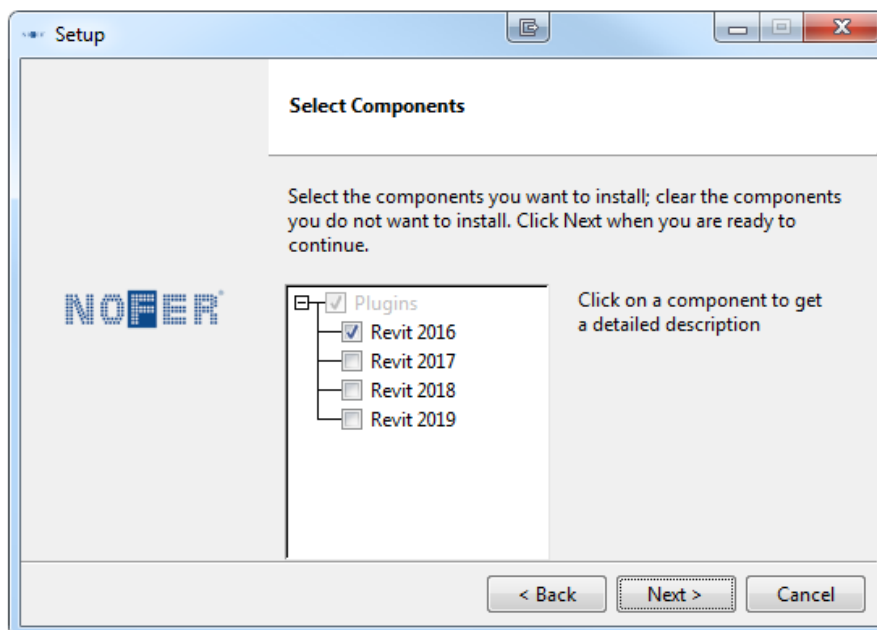
1. First click on the 'next' button



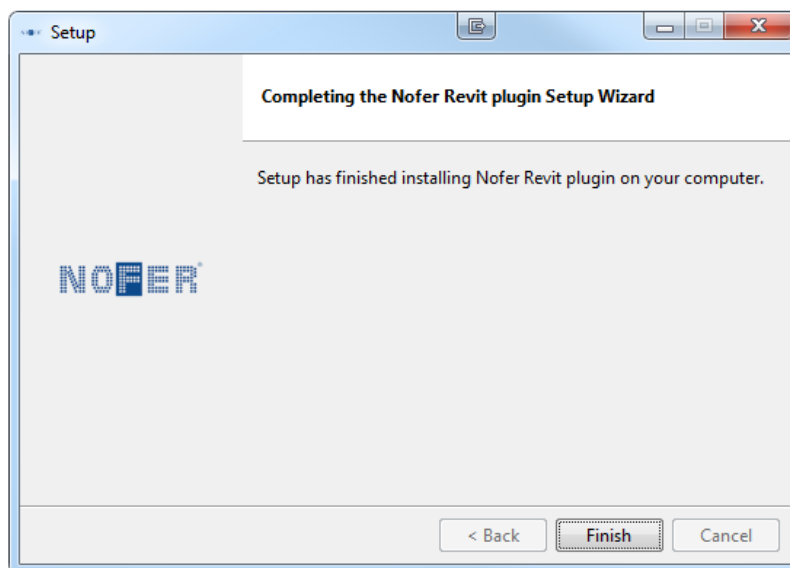
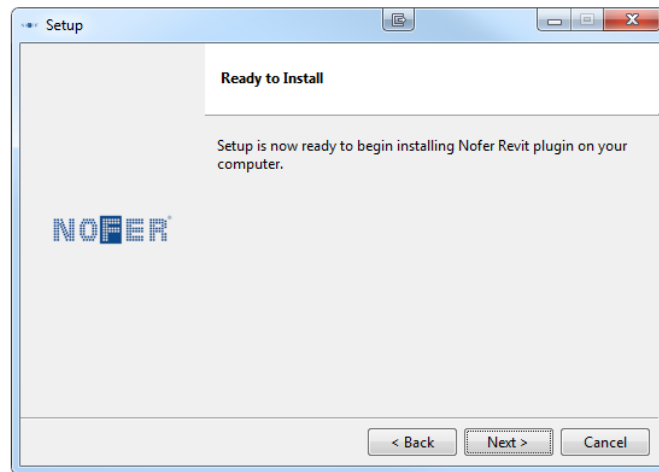
2. In order to access the use of the plugin, you must accept the conditions of the developer's license and click on the 'next' button.



3. Select version of REVIT where you want install Plugin and click on 'next'. If you wish to uninstall the plugin, then run the installer again and uncheck all the installed versions of this plugin.



4. In the "Ready to Install" window, click on 'next' and the installation will begin. Once finished, click on 'finish'. Then you can open Revit.



### 3. Registration and login

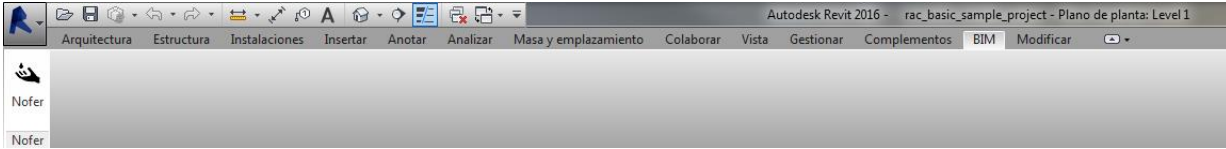
Registration and login is not mandatory, but allows access to new features such as sharing projects with the manufacturer or saving the products as 'favorites' for future use.

To register as a user, follow the following instructions:

- 1) Click on "New registration" button on bottom.
- 2) Fill in your email address.
- 3) Choose and fill in your password.
- 4) Retype your password for password confirmation.
- 5) Click on "Register" button, e-mail confirmation will be sent to your email.

#### 4. What can be found in the plugin and how to use it

After successful installation of the plugin, a new menu “BIM”, will appear in your Revit environment. Clicking on “Nofer” submenu, activates the configurator. For more information, see picture below:



#### 5. Plugin layout and functionality

You can see ‘CATEGORIES’ on the left side of the plugin, then ‘REQUESTED PROPERTIES’ that will help you find the right product through filtering the results and then ‘MATCHING PRODUCTS’. It is like in e-shop, when you are searching for the right products.

On the right side, there is a product detail with all parameters that this product contains. These parameters will be inserted into your BIM model. You can do that with 3 buttons on the lower right side that will help you specify NOFER product. Here is what is different within each other.

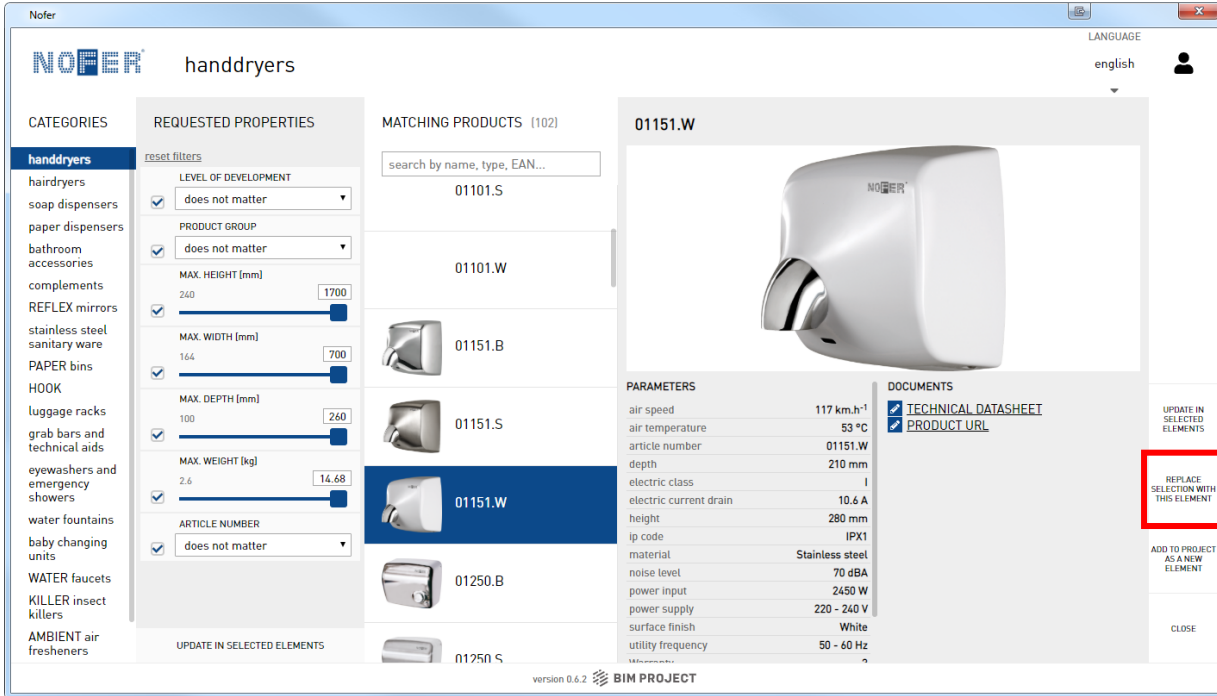
##### 5.1. Add to Project as a new element

When you are adding this product your project, plugin downloads best available geometry for this product and puts it into the project library. It also activates the proper tools so you can just click and put the object in your floor layout in 2D or 3D.



### 5.2. Replace selection with this element

This function will add the proper product into your project library, but if you have selected objects, it will also change the geometry with parameters for the new one. This will help you faster substitute all needed elements.



### 5.3. Update in selected elements

It may happen that you have your own geometry prepared. If you do not want to change your current object's geometry and just add information into BIM model, this function helps you with that. It erases all the properties and add those that are in database for the currently selected product.

NOFER handdryers

LANGUAGE english

CATEGORIES

- handdryers
- hairdryers
- soap dispensers
- paper dispensers
- bathroom accessories
- complements
- REFLEX mirrors
- stainless steel sanitary ware
- PAPER bins
- HOOK
- luggage racks
- grab bars and technical aids
- eyewashers and emergency showers
- water fountains
- baby changing units
- WATER faucets
- KILLER insect killers
- AMBIENT air fresheners

REQUESTED PROPERTIES

reset filters

LEVEL OF DEVELOPMENT

does not matter

PRODUCT GROUP

does not matter

MAX. HEIGHT [mm]

240 1700

MAX. WIDTH [mm]

164 700

MAX. DEPTH [mm]

100 260

MAX. WEIGHT [kg]

2.6 14.68

ARTICLE NUMBER

does not matter

UPDATE IN SELECTED ELEMENTS

MATCHING PRODUCTS (102)

search by name, type, EAN...

01101.S

01101.W

01151.B


01151.S

01151.W

01250.B

01250.S

01151.W



PARAMETERS

air speed	117 km.h <sup>-1</sup>
air temperature	53 °C
article number	01151.W
depth	210 mm
electric class	I
electric current drain	10.6 A
height	280 mm
ip code	IPX1
material	Stainless steel
noise level	70 dBA
power input	2450 W
power supply	220 - 240 V
surface finish	White
utility frequency	50 - 60 Hz

DOCUMENTS

- TECHNICAL DATASHEET
- PRODUCT URL

UPDATE IN SELECTED ELEMENTS

REPLACE SELECTION WITH THIS ELEMENT

ADD TO PROJECT AS A NEW ELEMENT

CLOSE

version 0.6.2 BIM PROJECT

www://www.nofer.com